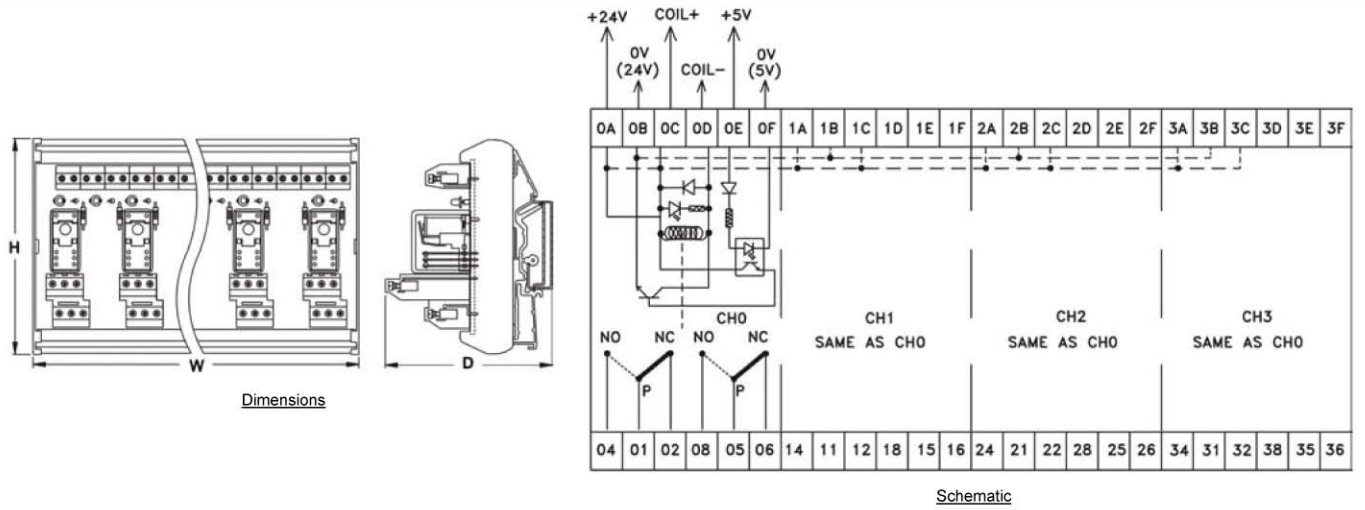


2 C/O Relay Module With OPTO INPUT



FEATURES	<ul style="list-style-type: none"> LED & Free wheeling diode across coil Optical isolation between control input and coil 	<ul style="list-style-type: none"> Direct coil operation Low current control input 					
CONNECTION DIAGRAM	<div style="display: flex; justify-content: space-around;"> <div style="text-align: center;"> <p>1) Direct Coil Operation (Typical)</p> </div> <div style="text-align: center;"> <p>2) Coil Operation through Opto (Typical)</p> </div> </div>						
CONTACT CONFIGURATION	2C/O						
NO. OF CHANNELS	4						
OPTO INPUT	5VDC / 12VDC / 24VDC (10mA per channel)						
RELAY	AUX. (COIL) VOLTAGE	12VDC	24VDC				
	MUST OPERATE VOLTAGE	9.6VDC	19.2VDC				
	MUST RELEASE VOLTAGE	2.4VDC	4.8VDC				
	MAX. COIL VOLTAGE	13.2VDC	26.4VDC				
	COIL CURRENT PER CHANNEL ⁽¹⁾	50mA	25mA				
	OPERATE (SET) TIME	15ms max.	RELEASE (RESET) TIME	20ms max.			
	ENDURANCE	Mechanical : 20,000,000 operations min. (at 1,800 operations/hr) Electrical : 100,000 operations min. (at 1,800 operations/hr under rated load)					
MAX. OPERATING FREQUENCY	Mechanical : 18,000 operations/hr Electrical : 1,800 operations/hr						
DIELECTRIC STRENGTH	1. Opto input to Auxiliary supply : 500VAC , 50/60 Hz for 1 minute 2. Opto input to contacts : 1.5KVAC , 50/60 Hz for 1 minute 3. Coil to coil (when isolated) : 100VAC , 50/60 Hz for 1 minute 4. Coil to contact : 1.5KVAC , 50/60 Hz for 1 minute 5. Contacts of different polarity : 1KVAC , 50/60 Hz for 1 minute 6. Contacts of same polarity : 1KVAC , 50/60 Hz for 1 minute 7. Contacts - channel to channel : 1.5KVC , 50/60 Hz for 1 minute						
CONTACT RATING	RELAY	5A@28VDC/230VAC	ON BOARD	5A@28VDC/230VAC			
OPERATING AMBIENT	0~55°C, 85% RH						
STORAGE AMBIENT	-20°C to 85°C						
TERMINATIONS	COIL TERMINATION	Screw type, for 2.5mm sq. wire	CONTACT TERMINATION	Screw type, for 2.5mm sq. wire			
MOUNTING	35 mm DIN rail						
ORDERING INFORMATION	AS720, -5V, -24V, -OM						
	NO. OF RELAYS	DESIGN NO.	OPTO INPUT	RELAY COIL VOLTAGE	RELAY MAKE	DIMENSIONS W x H x D (mm)	WEIGHT (MAX)
4	AS720	5V: 5VDC 12V: 12VDC 24V: 24VDC	12V : 12VDC 24V : 24VDC	OM : OMRON G2R : OEN 58DP	137 x 80 x 70	330 grams	
Note : 1. Current including LED current.							